



MONTHLY MEMBERSHIP PROGRESS REPORT

Results as of: 3/31/2015

Multiple District 1

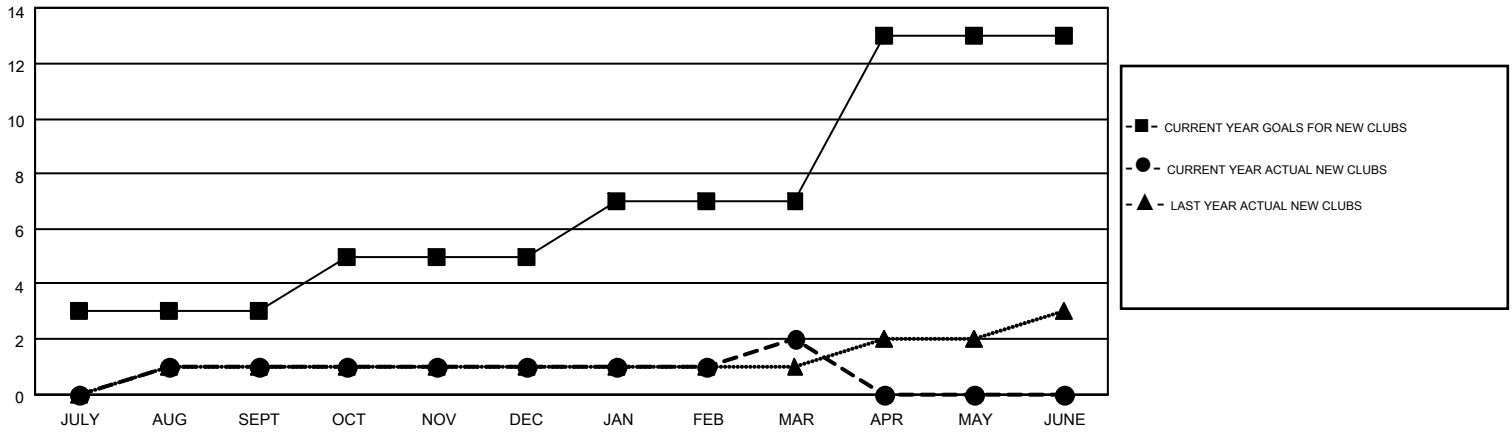
LOCATION: ILLINOIS

GMT: THOMAS MATNEY

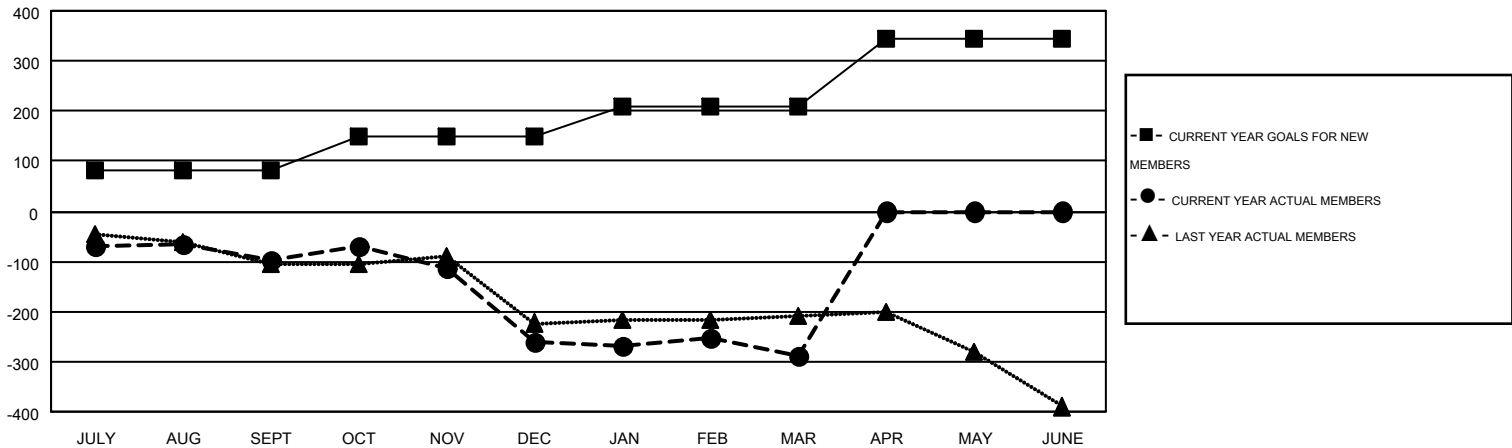
GMT CA 1

Clubs					Members				
RESULTS FOR 2014-2015					RESULTS FOR 2014-2015				
QUARTER	NEW CLUB GOAL	NEW CLUBS	DROPPED CLUBS	NET GAIN/LOSS	QUARTER	NEW MEMBER GOAL	CHARTER AND NEW MEMBERS ADDED	DROPPED MEMBERS	NET GAIN/LOSS
JULY/AUG/SEPT	3	1	0	1	JULY/AUG/SEPT	83	299	398	-99
OCT/NOV/DEC	2	0	7	-7	OCT/NOV/DEC	65	327	488	-161
JAN/FEB/MAR	2	1	1	0	JAN/FEB/MAR	61	319	347	-28
APR/MAY/JUNE	6	0	0	0	APR/MAY/JUNE	137	0	0	0

GOALS AND ACTUAL NEW CLUBS CUMULATIVE



GOALS AND ACTUAL MEMBERS CUMULATIVE



DROPPED CLUBS: 8	283 CLUBS OF 531 ADDED 1 OR MORE NEW MEMBERS	<u>GENDER DISTRIBUTION</u>	
<u>DROPPED MEMBERS</u>		MALE	11,970 (78.24%)
DECEASED	200	FEMALE	3,329 (21.76%)
CLUB CANCELLED	86	CLICK HERE FOR HEALTH ASSESSMENT DATA	
OTHER	947	FAMILY UNIT MEMBERS	2,202
TOTAL	1,233	HEAD OF HOUSEHOLD	1,065
		NON-HEAD OF HOUSEHOLD	1,137